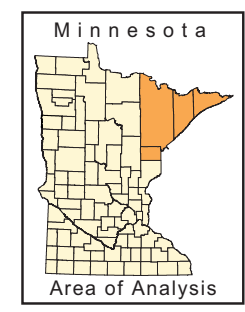
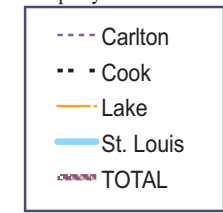
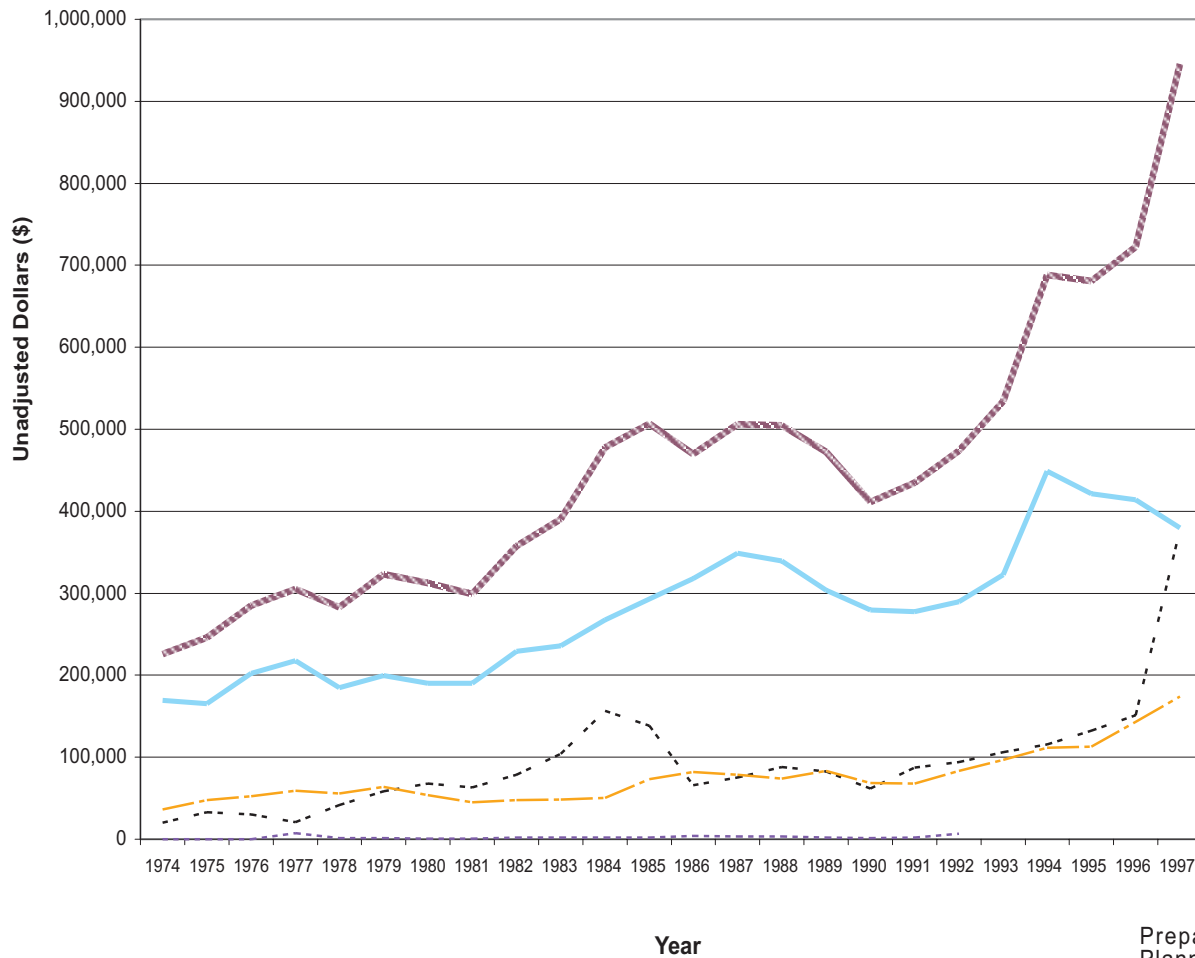


# Estimated Taxes From Seasonal/Recreational Commercial Uses 1974-1997 Northeast Region

Source: MN Department of Revenue,  
Property Tax Division



Prepared for the Northeast Minnesota Landscape Planning Committee by the Interagency Information Cooperative and the Land Management Information Center at the Minnesota Office of Strategic and Long Range Planning.

Created: June 1998.